

FAQ

An answer to the most frequently asked questions.

Why use the CLEVER toothbrush ?

The toothbrush removes plaque with success even from the most hidden corners of your teeth. The teeth and gums, influence, in their substantial perceptibility, the beauty of the face and the aesthetics of the smile.

What benefits will I have using the CLEVER toothbrush?

Regular cleaning of the teeth with the CLEVER toothbrush will protect you in an effective and reliable way from caries, bad breath, inflammation of the gums and other dental problems.

You will also notice a gradual WHITENING of your teeth by extrinsic stains of nicotine and caffeine and a reduction in the formation of tartar.

Who Should Use the CLEVER toothbrush?

TO ALL who want a bright smile and maintain oral hygiene. For the SMOKERS as It reduces, in a few weeks of nicotine stains. For the CHILDREN, not being necessary the use of toothpaste is ideal for the children because a child should not swallow the toothpaste (Children should use it under the instructions of adults).

Must I use a toothpaste?

It's not necessary to use a toothpaste. For those who cannot give up a toothpaste, we recommend to use it in small quantities.

How to use the CLEVER toothbrush?

Wet the entire toothbrush and clean the teeth as if you were using a manual toothbrush.

How should I hold my toothbrush?

Hold the CLEVER toothbrush wet with the palm of your hand or touching lightly, all the time of use, the metal plate color "silver" at the end of the handle that acts as an electrode. Pay attention if the LED is not on when using the toothbrush on check:- that the toothbrush is wet or - that the toothbrush is hold correctly (see previous paragraph) If led is not on, at first use, wash the entire toothbrush with the water, till the light is on.

How long last the battery?

The battery of the CLEVER toothbrush lasts about 6 months, under normal conditions.

What precautions to consider if you decide to use the toothbrush travel case?

Remove the warranty seal from the housing and the two adhesives located at the bottom and the top of the cylindrical container to free the holes that allow the ventilation of the toothbrush when it is placed in the holster.

Certificate

Product name: TOOTHBRUSH **Clever**

Date of purchase: _____

Stamp and signature of the seller:

The name, location of the seller and the date of delivery of the product are listed on the invoice.



Read more



IMPORTER AND DISTRIBUTOR

JC ITALIA di Piccinini Vito

Partita IVA 11991531002

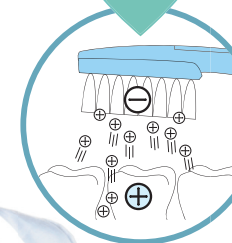
N. Iscr. Reg. Imprese e C.F. PCCVNS7A25F205J

R.E.A. di Milano 1991294

Clever
The Toothbrush

*The seduction
begins with a smile*

Yesterday
Today
Tomorrow



IMPORTER AND DISTRIBUTOR



e-mail: relazionicienti@jc-italia.it

website: www.jc-italia.it

Benefits



The **CLEVER TOOTHBRUSH** completely removes plaque below the gum collar, through the principle of polarity.

Through this process all the plaque even in the remotest corners of your teeth is removed successfully.

Using a **CLEVER** toothbrush frequently you will notice a gradual **WHITENING** of your teeth by extrinsic stains and a reduction in the formation of tartar.

Ideal for **REMOVING STAINS** of nicotine and caffeine.

Recommended in the treatments of **GINGIVAL BLEEDING** and **HYPERSENSITIVITY** to hot and cold.

Regular cleaning with the **CLEVER** toothbrush reliably protects teeth, gums and your health.

Informations

Bacteria -> Plaque -> Dental calculus -> Gingivitis and further Pyorrea

Good oral hygiene is of fundamental importance for the mouth health, as it prevents the storage and accumulation of bacterial plaque.

Plaque is the cause of tooth decay, gum and bone diseases.

Plaque, a soft, whitish substance that sticks to teeth and gums is caused due to accumulation of microbes (bacteria) on our teeth and gums that are normally present in the mouth of everyone.

These bacteria use the food and turn it into acid that "eats away the tooth" (tooth decay), these bacteria also inflame the gums and underlying bone (causing gingivitis and parodontale disease).

In gingivitis, the gums appear red, sometimes swollen and above all bleed easing. Gingivitis is the early and reversible stage of gum disease.

If plaque is not removed by brushing in about 24 - 48 hours, it begins to calcify and becomes tartar. Basically, plaque and tartar are just lots of bacteria attached to teeth and gums.

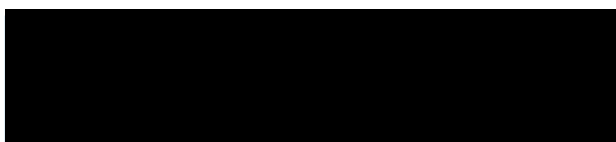
To maintain healthy teeth and gums removing the plaque by proper daily hygiene is of vital importance, because removing the plaque prevent tartar to be formed.

Instructions for use

How to use the CLEVER toothbrush:

- To facilitate the action of a CLEVER toothbrush we suggest that you rinse your mouth with water so that your teeth remain moist (the action of water / saliva is essential).
- Wet the entire toothbrush.
- The use of a toothpaste is not necessary, for those who cannot give up, use it in small quantities.
- Hold the CLEVER toothbrush wet with the palm of your hand or touching lightly, all the time of use, the metal plate color "silver" at the end of the handle that acts as an electrode.
- Place the toothbrush on the teeth, making so the circuit closes and the ionization process starts (you will be informed by an indicator light located on the toothbrush).
- Clean the teeth as if you were using a normal toothbrush. To get the benefits is sufficient to place it lightly on the surface of the teeth and no vigorous brushing is needed.
- After use, thoroughly rinse the toothbrush under running water and make sure the LED is off otherwise dry the toothbrush handle.

The battery of the CLEVER toothbrush lasts about 6 months, under normal conditions.



Clever The Toothbrush

“Regular cleaning of teeth and the dorsum of the tongue with the CLEVER toothbrush effectively and reliably protects you from tooth decay, bad breath, inflammation of the gums and other dental problems..”

Functioning

How to use the CLEVER toothbrush:

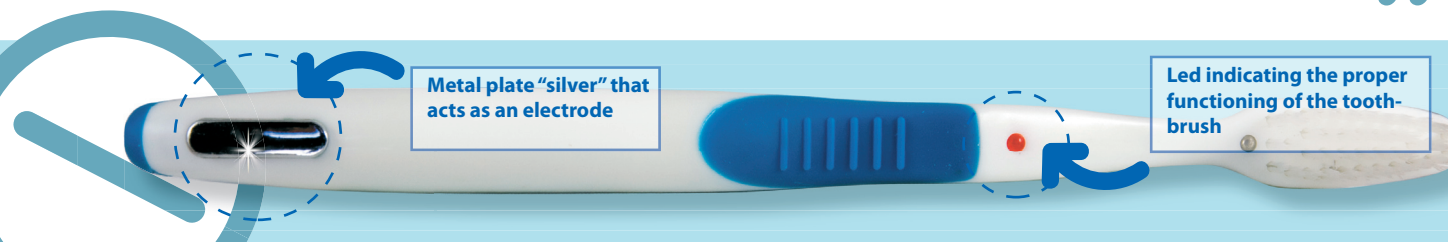
The CLEVER toothbrush works on the principle of polarity.

Every atom in the nature when it acquires or loses an external electron ceases to be neutral and results positively charged if it has lost an electron (positive ion) or negatively charged if acquires (negative ion).

Elements of the same polarity repel each other, while elements of different polarities attract each other.

- When holding a wet CLEVER toothbrush and placing it on your teeth, a circuit is closed and an LED on the toothbrush turns on. This is possible because of the battery placed inside the toothbrush;
- By closing the circuit a negative charge is caused on the head of the toothbrush;
- Tooth enamel temporarily changes its charge from negative to positive;
- Tooth plaque, which is also positively charged, detaches from the enamel;
- The bristles of the brush head CLEVER having negative charge attract the plate that has a positive charge.

The plate is then removed with success, even in the remotest corners, from your teeth and your mouth will be protected from dental problems (plaque, tartar, cavities, etc..), Gingivitis and bad breath.



Colours available:

